

Part # PLRB

Shown Mounted
Into Enclosure



3 Channel Transmitter (Keyfob)

Channel One: Button One
Unlocks Outboard Relay.
Channel Two: Button One,
When Pressed Immediately
After, Unlocks The
PLRB-RC3 Control Board.

I

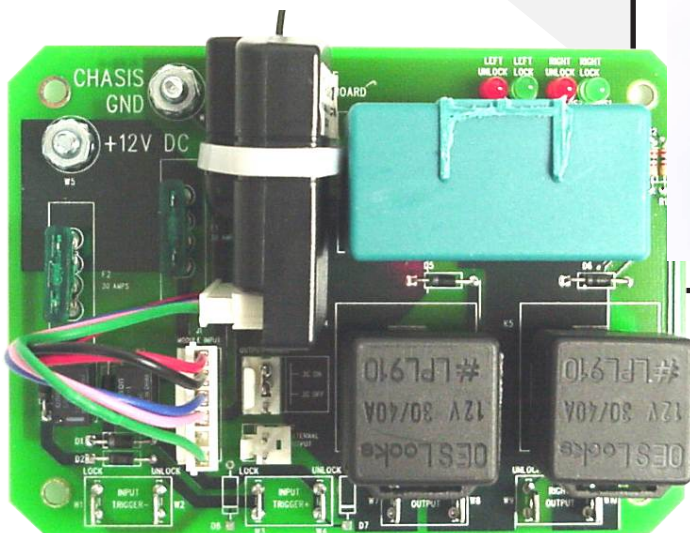


II

Channel Three: Button Two
Locks Outboard And
Main Control Module.

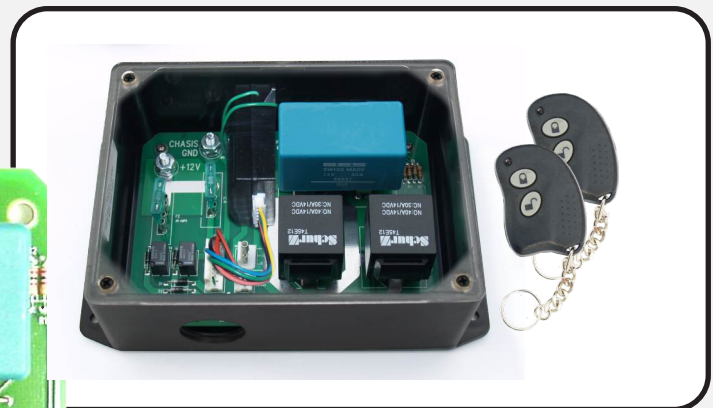
Part # PLRB-RC

Keyless Power Lock Relay
Control Module



Patent Pending

Shown Out Of
Enclosure



Complete Enclosed PLRB-RC

Relay Control Module



Complete PLRB In Enclosure



Component I.D.

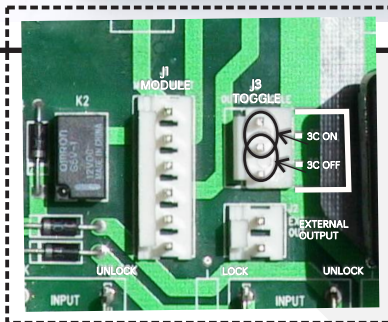
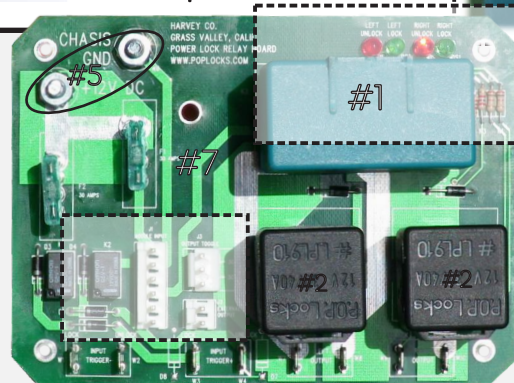
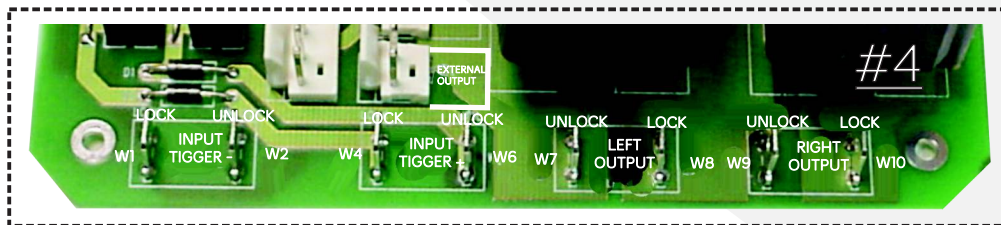


FIG 3



Part List:

- #1- 6 pin timed relay.
- #2- 5 pin 30/40 relays.
- #3- 30 amp fuses.
- #4- Eight 1/4" stab connectors.
- #5- Power & Ground lugs.
- #6- 2 red 2 green LEDs.
- #7- RC unit location and mounting hole.



(W1 W2 Input Trigger -): Intended momentary negative input triggering main control module.

(W4 W5 Inputs Trigger +): Intended momentary positive input triggering main control module. Any 12v including circuits that hold a negative at rest.

(W7 W8 Outputs): Negative at rest 12-volt, fused ATC @ 30 Amp. Suggested use on vehicles left side wire harness. See wiring details.

(W9 W10 Outputs): Negative at rest 12-volt, fused ATC @ 30 Amp. Suggested use on vehicles right side wire harness. See wiring details.



J1 Module: Keyless Entry Control Module Input.

J3 Toggle: Dip Switch 3rd Channel Flip/Flop Option.

External Output: 3rd Channel Or Additional Piggy Back Relay Option. Use Provided Jumper And Close Pins Indicated To Activate 3rd Channel. Slave Piggy Pack On, Close Pins 3C As Indicated.



3 Channel Transmitter (Keyfob)

Channel One: Button One
Unlocks Outboard Relay.
Channel Two: Button One,
When Pressed Immediately
After, Unlocks The PLRB-RC3
Control Board.



Channel Three: Button Two
Locks Outboard And
Main Control Module.

WIRING SCHEMATIC PART # PLRB-RC NEW WORK WITH OUTBOARD RELAY Shown With Various Triggers.

Outboard Relay
Part # PL910p.
Max. 5 Additional
Compartments Or
Independent 3rd
Channel Output.

